

# IMC Areas App

## Description:

The purpose of this application is to examine electronic contact areas on IC contacts, looking for corrosion between copper ball ends and aluminum contact sites. This app prompts you to identify the contact point region by drawing an ROI over it, and it then prompts you for the segmentation thresholds that identify the uncorroded aluminum. With that information, it reports the percentage area of the ROI not containing uncorroded aluminum – that is, the percentage area covered in corrosion products.

## User Interface:

### General

- **Operator ID:** (*Required*) Enter the name of the operator, which will be listed in the output report.
- **Calibration:** Select the spatial calibration which will apply to each image.
- **ROI/Diameter:** Enter the calibrated diameter of the Region of Interest to be initially placed over the contact area.
- **Magic Wand:** Use Magic Wand tool to select the contact area.

### Batch group

If desired, you can run a batch process that performs the corrosion analysis on every image file of a specified type in a specified folder.

- **Batch Folder:** Select the folder containing the images you want to batch process.
- **Keep Annotated image open:** If unchecked, images will be closed after processing.
- **Batch Process:** Click this button to initiate the batch processing routine. Image-Pro Plus will proceed to perform the Corrosion Analysis on each image in the specified batch folder. Results, including snapshots of the measurement overlays, segmentation settings, and a text file with the data, will be placed into a dated subdirectory.

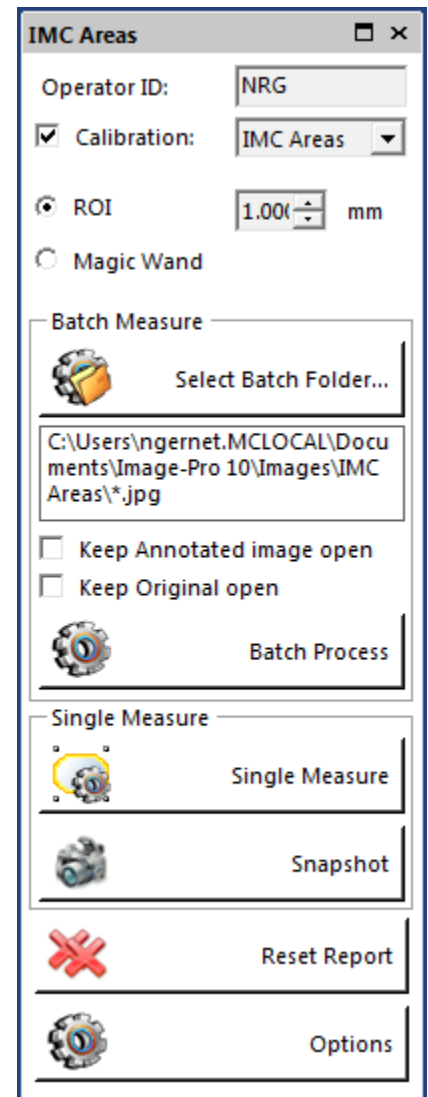
### Single Measure group

If desired, you can have the app perform corrosion analysis on the currently opened image.

- **Single Measure:** Click this button to initiate corrosion analysis for the currently-active image. You will be prompted through the steps for measuring the active image.
- **Snapshot:** Click this button to snap an image containing all overlays.

### Reset Report

Click this button to clear the Output Window and redisplay the headers.



## Options

Click this button to open Options page.

### General

- **Threshold/Select/Reset** – select threshold configuration file or reset it to default.
- **Measure/Select/Reset** – select measurements configuration file or reset it to default.
- **Report/Select/Reset** – select report (Data Collection) configuration file or reset it to default.

These files used to save/load configurations between images and runs.

### Annotation

- **Operator ID** – show/hide Operator ID on annotation.
- **IMC % Area** – show/hide IMC % Area on annotation.
- **Font size** – defines annotation text size.
- **Location** – defines annotation location.

