



Leica MC170/190HD Capture Interface 9 Installation Guide

Version: 9.3.0

Release Date: August 28, 2018

Installing the *Leica* MC170/190HD Capture Interface

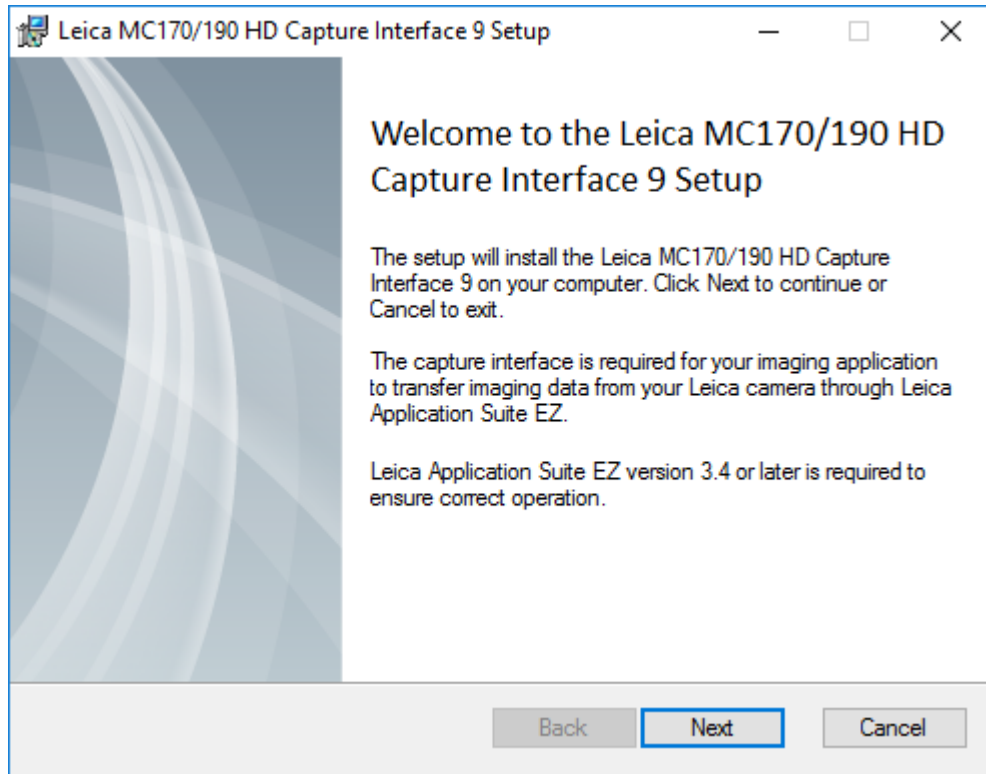
To acquire images with your imaging software, you must first install the appropriate capture interface. This is available from the Media Cybernetics support website at:

<http://www.mediacy.com/support/hardwaresupport>. These instructions cover the installation of the capture interface **only**.

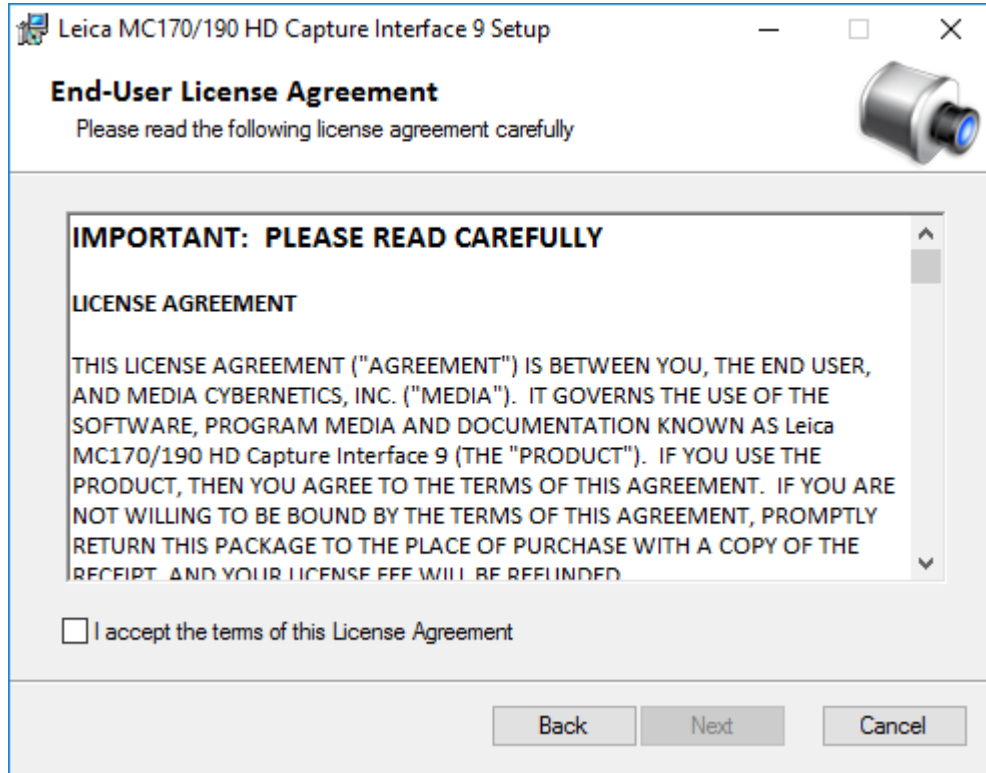
You should also install the *LAS EZ* camera software from *Leica*. This software is included with the camera.

To install the *Leica MC170/190HD Capture Interface*, follow these steps.

1. Download the *Leica MC170/190HD Capture Interface* from the *Media Cybernetics* support website and double-click on the installation application.
2. Click **Next** to begin installing the *Leica MC170/190HD Capture Interface*.
You will see the *Welcome Screen*.

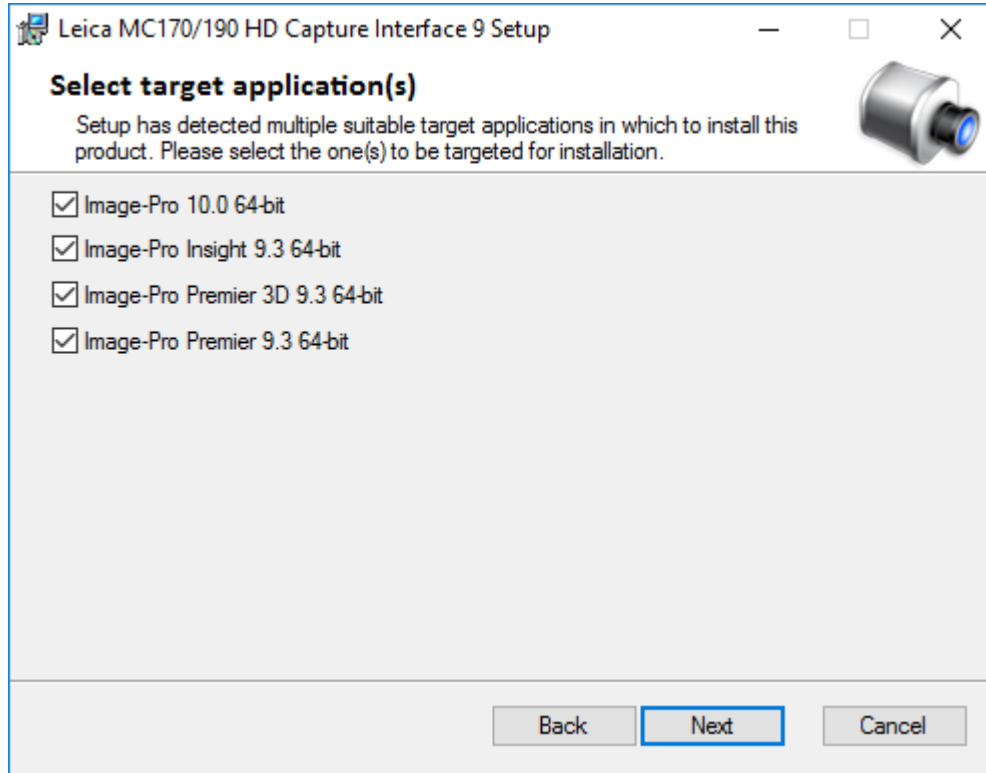


3. Click **Next** to begin installing the *Leica MC170/190HD Capture Interface*.
You will see the *Leica MC170/190HD Capture Interface End-User License Agreement*.

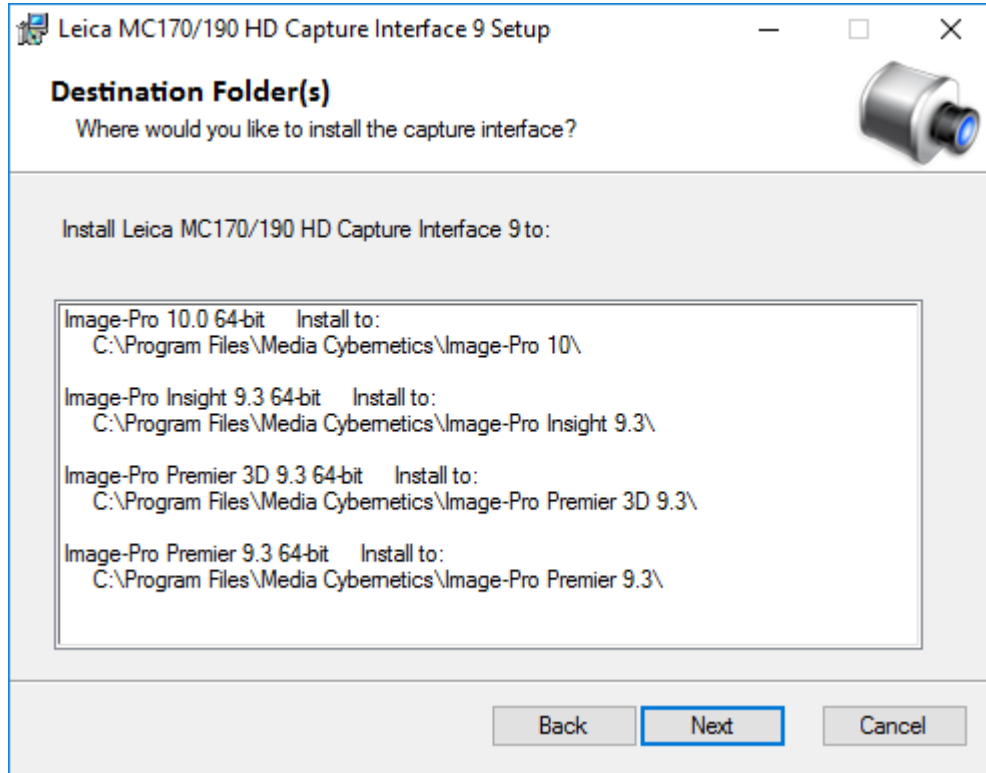


4. Check the box to accept the license agreement and click **Next**.

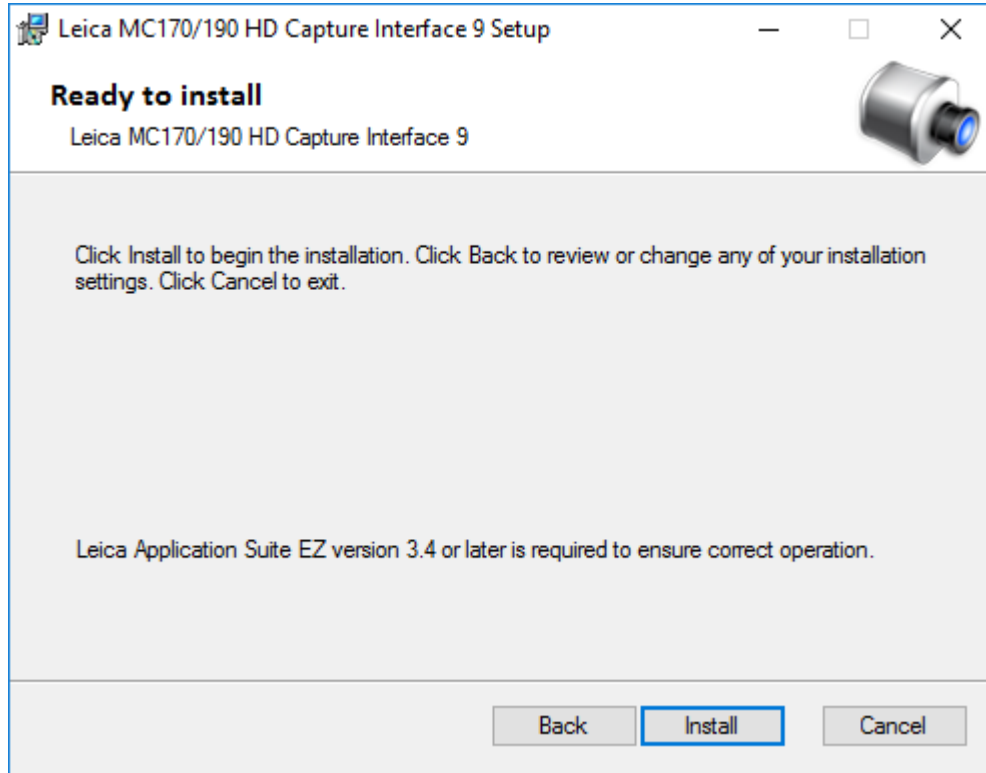
The *Select Target Application* screen appears.



5. Check the box to indicate which software application you are using.
6. Click **Next** to continue.
The *Select Destination Folder* screen appears.

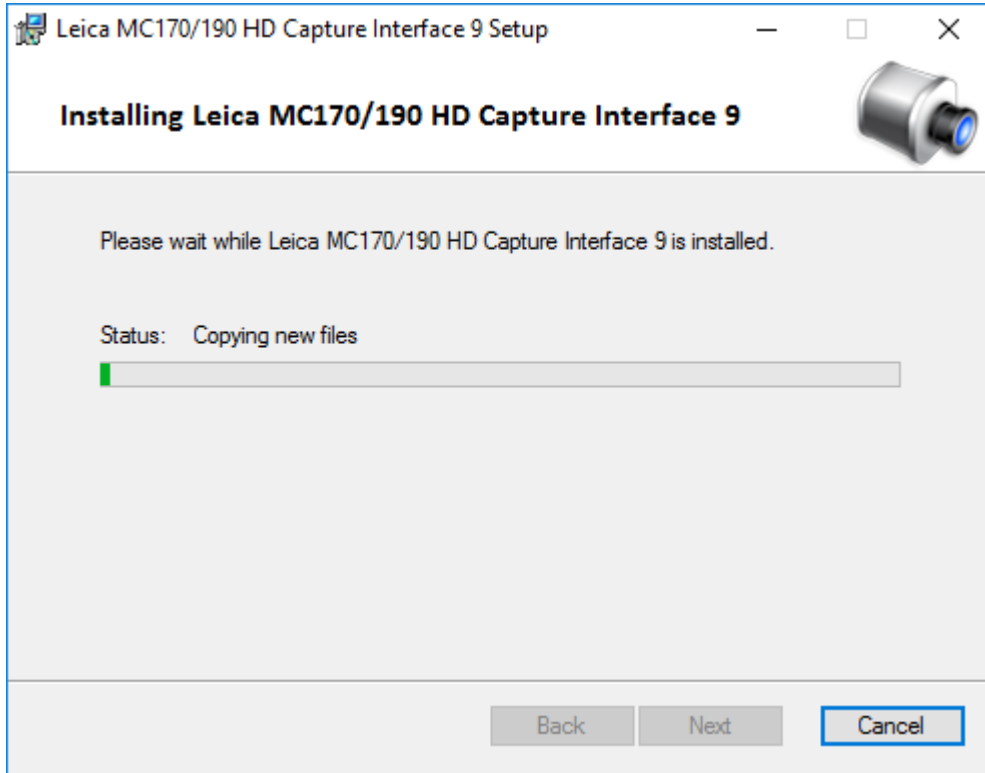


7. Indicate the program location, then click the **Next** button.
The *Ready to Install* dialog box appears.



This screen indicates that your computer is ready to install the *Leica MC170/190HD Capture Interface*.

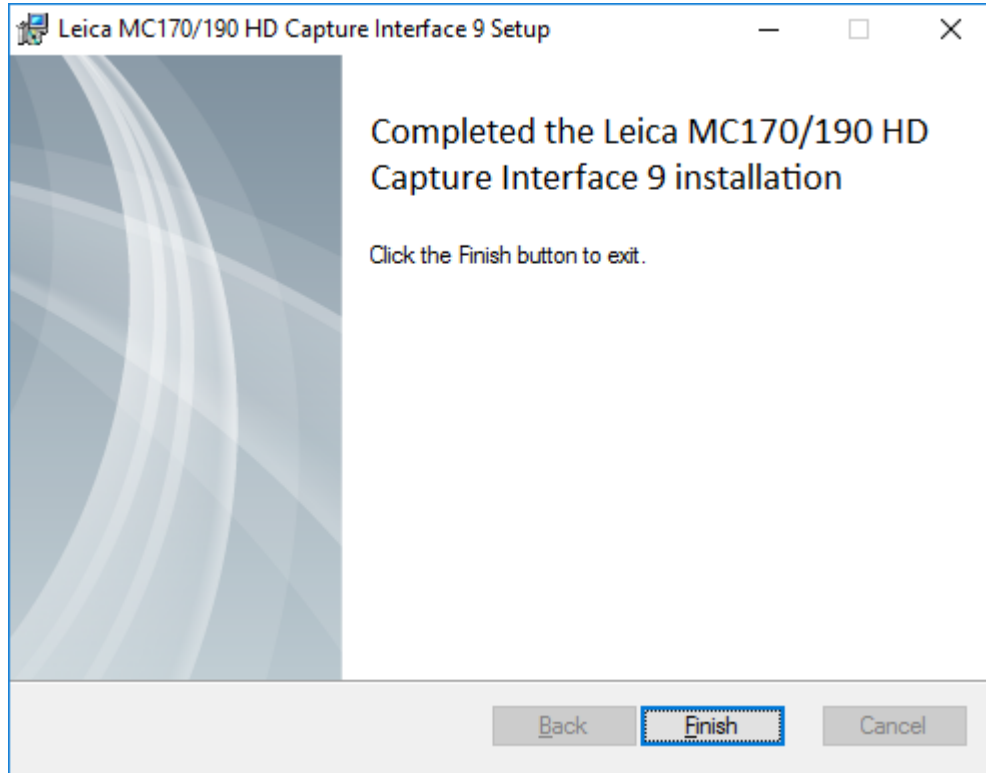
8. Click **Install** to continue.



The *Installing* dialog box appears.

9. The setup program will begin copying and installing files. Click **Next** when the installation is complete.

The next page shows that the capture interface installation is complete.



10. Click the **Finish** button.

You will see the following message:

