



Jenoptik GRYPHAX Capture Interface 10 Installation Guide

Version: 10.0.0

Release Date: June 2, 2021

Installing the *Jenoptik GRYPHAX* Capture Interface

To acquire images with your imaging software, you must first install the appropriate capture interface. This is available from the Media Cybernetics support website at:

<http://www.mediacy.com/support/hardwaresupport>. These instructions cover the installation of the capture interface **only**.

You should also install the *GRYPHAX* camera software from *Jenoptik*. This software can be downloaded from the *Jenoptik* website at the end of the *Jenoptik GRYPHAX Capture Interface* installation.

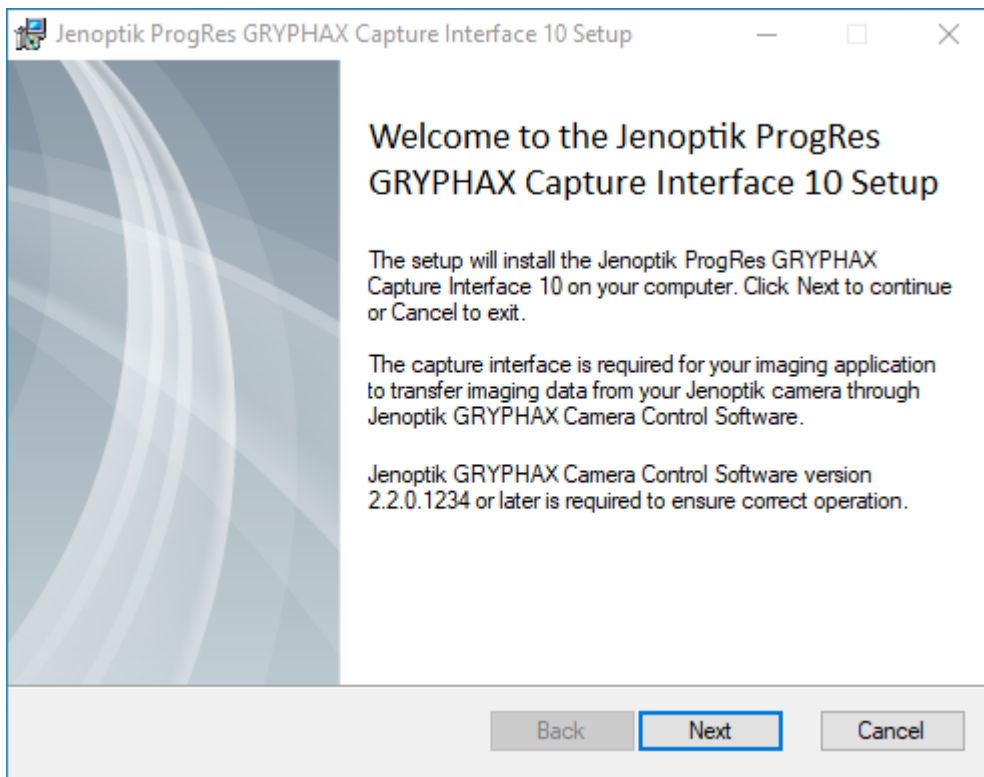
Recent improvements to the *Jenoptik* camera driver may affect compatibility with older software products. If your system is already configured to use your camera in another software application, please confirm compatibility with your software vendor prior to installing the latest version of the *Jenoptik* camera driver.

To install the *Jenoptik GRYPHAX Capture Interface*, follow these steps.

1. Download the *Jenoptik GRYPHAX Capture Interface* from the *Media Cybernetics* support website and double-click on the installation application.

2. Click **Next** to begin installing the *Jenoptik GRYPHAX Capture Interface*.

You will see the *Welcome Screen*.

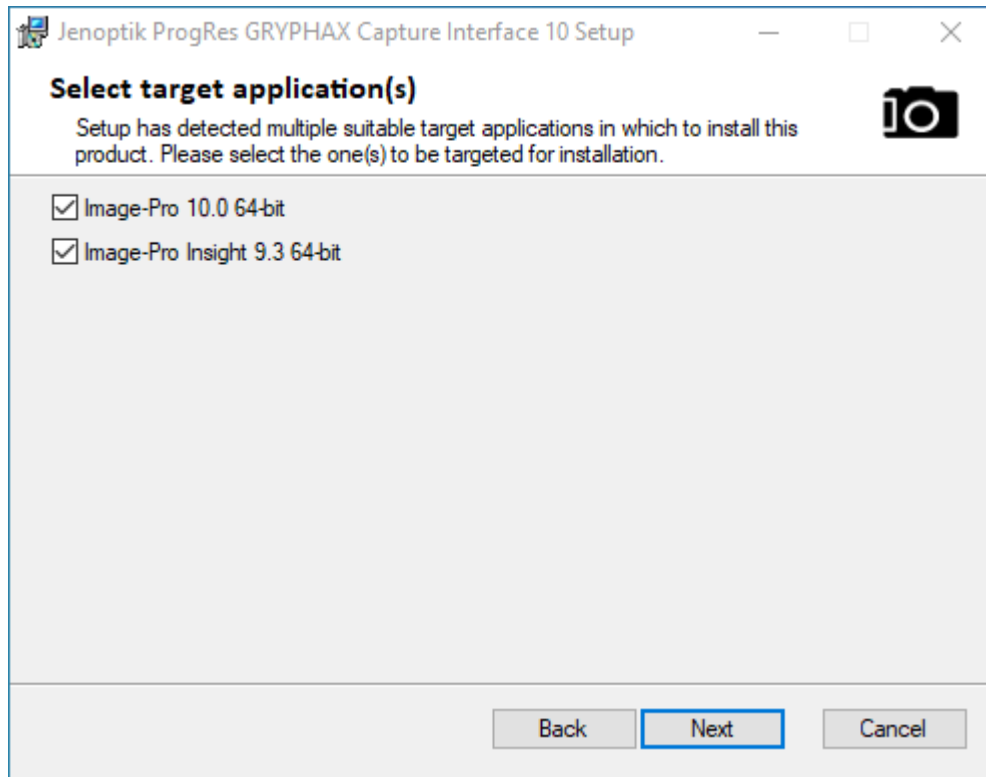


3. Click **Next** to begin installing the *Jenoptik GRYPHAX Capture Interface*.

You will see the *Jenoptik GRYPHAX Capture Interface End-User License Agreement*.

4. Check the box to accept the license agreement and click **Next**.

The *Select Target Application* screen appears.



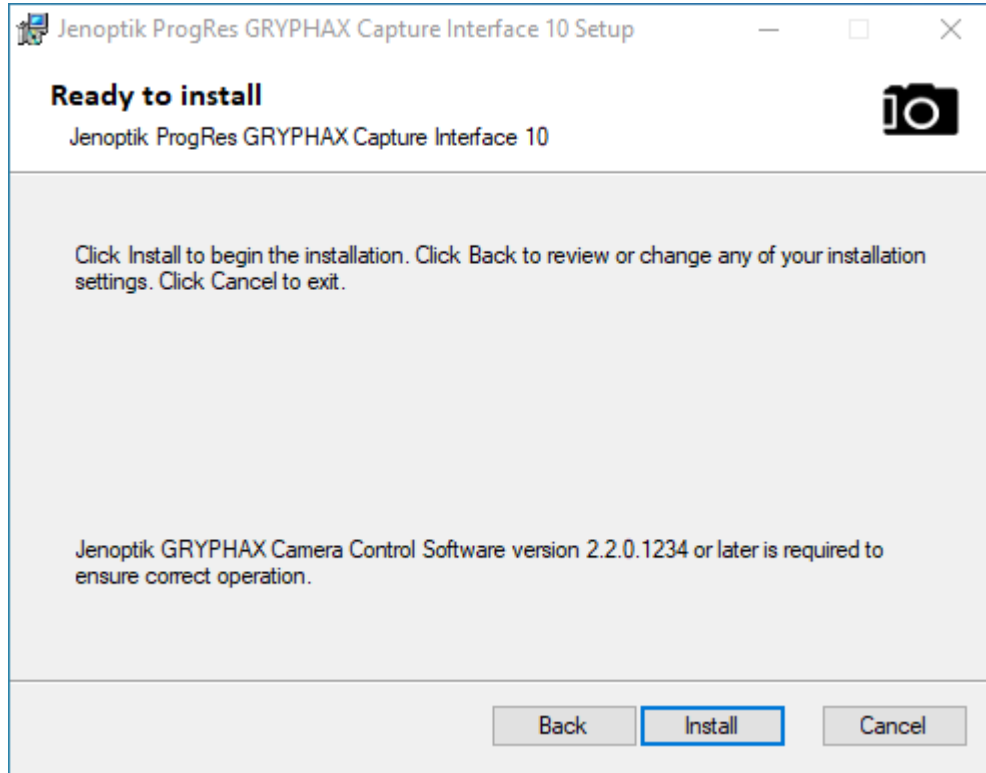
5. Check the box to indicate which software application you are using.

6. Click **Next** to continue.

The *Select Destination Folder* screen appears.

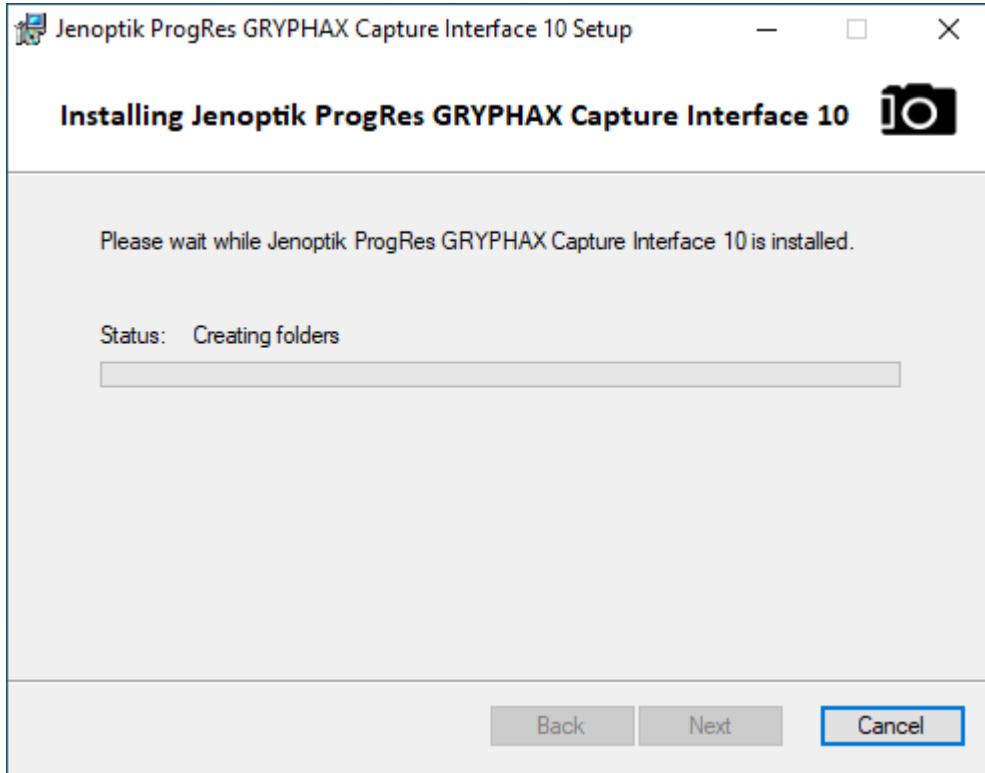
7. Indicate the program location, then click the **Next** button.

The *Ready to Install* dialog box appears.



This screen indicates that your computer is ready to install the *Jenoptik GRYPHAX Capture Interface*.

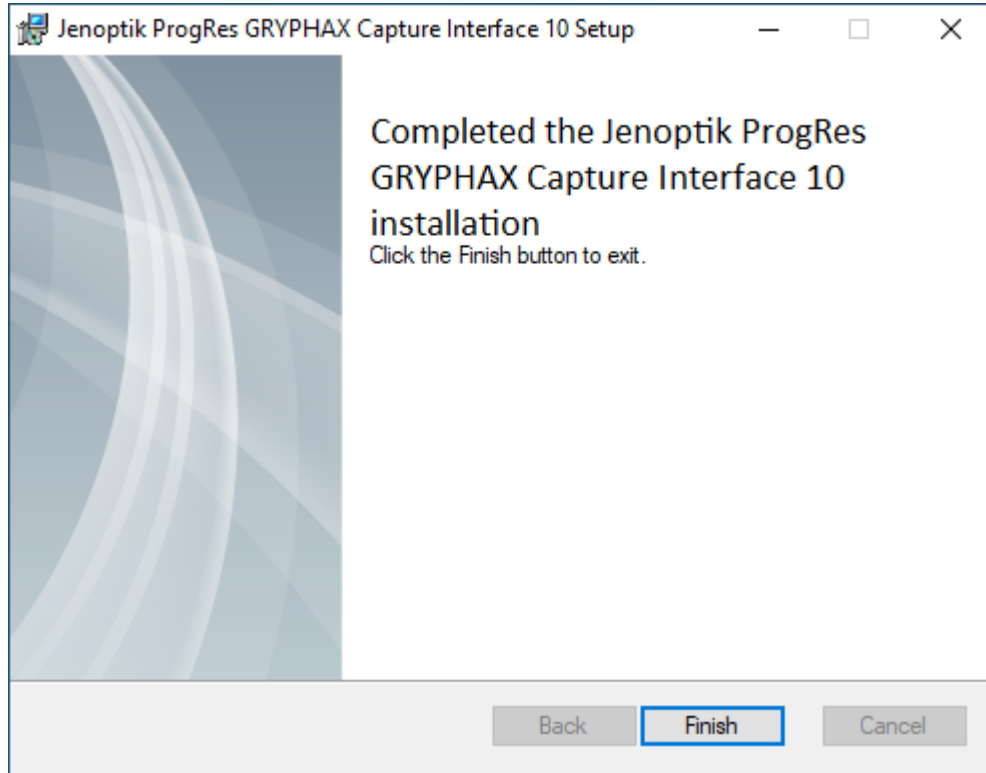
8. Click **Install** to continue.



The *Installing* dialog box appears.

9. The setup program will begin copying and installing files. Click **Next** when the installation is complete.

The next page shows that the capture interface installation is complete.



10. Click the **Finish** button.

You will see the following message:

